

AGRIFLEX FAMILY PREMIUM IF & VF TIRES FOR EVERY MACHINE ON THE FARM



THE LARGEST SELECTION OF VF TIRES IN THE INDUSTRY



AND THE WORLD'S ONLY VF FLOTATION LINE

VF tires are constructed with sidewalls that enable them to bear heavier loads and operate at lower inflation pressures than traditional radial tires. In fact, VF tires, like our Alliance AgriFlex+ range, can carry up to 40% more load than a conventional radial tire at the same inflation pressure or operate at up to 40% lower air pressure under the same load.

VF tires offer quantifiable improvements on the farm. For example, the ability to carry heavier loads can cut down significantly on fuel use and reduce machine hours, while the ability to operate at lower inflation pressures allows tires to produce larger footprints, which can improve traction and reduce soil compaction. The best part is, you can choose which benefit works best for your operation.

THE ALLIANCE WHOLE-FARM CONCEPT

Why reduce compaction with VF tires on your tractor, just to cause it with standard tires on your grain cart? Yokohama OHT is the only company offering a complete line of IF/VF tires for every machine on the farm. From Tractors and Sprayers to Combines and towed implements, you can take advantage of Agriflex technology to consistently increase the productivity and efficiency of your operation by reducing soil compaction, fuel consumption and total cost of ownership.

AGRIFLEX+

Very High Sidewall Flexion

AGRIFLEX

Increased Sidewall Flexion

Standard Radial

Standard Sidewall Flexion



AGRIFLEX+ 354 STEEL BELTED R-1W

OEM FITMENT

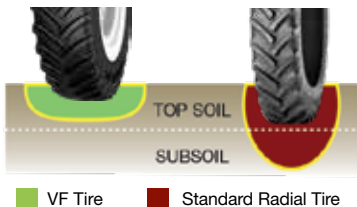


The Alliance Agriflex+ 354 has state-of-the-art materials and the steel-belted construction allow VF (Very High Flexion) and IF (Increased Flexion) radial tractor tires to deliver outstanding performance in any conditions. VF tires carry 40% more load on the same inflation pressure as conventional radials, or require 40% less inflation pressure for the same load, to reduce soil compaction. IF tires carry 20% more load on the same inflation pressure as conventional radials, or require 20% less inflation pressure for the same load. (TUBELESS - STEEL BELTED - STUBBLE GUARD)



| PRODUCT CODE | SIZE | ALT. SIZE | PR/LI | PLY/* | TYPE | TREAD DEPTH | PREFERRED RIM | OD | WIDTH | RC | SLR | MAX LOAD (LBS) | PSI | MAX SPEED |
|--------------|---------------|-----------|-------|-------|------|-------------|---------------|------|-------|-------|------|----------------|-----|-----------|
| 35410005 | VF 380/85R30 | 14.9R30 | 146D | | TL | 59 | DW13 | 55.6 | 15.5 | 163.9 | 24.6 | 6610 | 29 | 40 |
| 35400105 | VF 420/90R30 | | 153D | | TL | 62 | DW13 | 59.8 | 17.7 | 176.6 | 26.3 | 8040 | 29 | 40 |
| 35400224 | VF 320/85R32 | | 139D | | TL | 56 | W11 | 53.4 | 12.6 | 158.1 | 24.2 | 7490 | 23 | 40 |
| 35400028 | VF 320/85R34 | | 143D | | TL | 56 | W11 | 55.7 | 12.8 | 166.0 | 25.3 | 8410 | 29 | 40 |
| 35400009 | VF 380/85R34 | 14.9R34 | 149D | | TL | 59 | DW13 | 60.0 | 15.6 | 177.3 | 26.7 | 7160 | 29 | 40 |
| 35450109 | VF 420/85R34 | | 159D | | TL | 60 | DW14L | 62.0 | 16.4 | 183.5 | 27.7 | 9640 | 35 | 40 |
| 35400017 | VF 480/70R34 | | 160D | | TL | 59 | DW16L | 62.2 | 19.5 | 185.8 | 28.1 | 9910 | 44 | 40 |
| 35400031 | VF 320/85R38 | | 155D | | TL | 56 | W11 | 59.3 | 12.6 | 178.1 | 27.3 | 8540 | 52 | 40 |
| 35400002 | VF 380/80R38 | 14.9R38 | 154D | | TL | 59 | DW13 | 62.6 | 15.0 | 185.4 | 28.5 | 8260 | 35 | 40 |
| 35450004 | VF 380/95R38 | | 159D | | TL | 60 | DW13 | 66.4 | 15.4 | 196.7 | 29.9 | 9640 | 35 | 40 |
| 35400018 | VF 480/80R42 | 18.4R42 | 162D | | TL | 66 | DW16 | 72.8 | 19.3 | 216.1 | 32.5 | 10460 | 29 | 40 |
| 35450046 | VF 320/90R46 | | 160D | | TL | 56 | DW10 | 68.7 | 12.4 | 208.3 | 31.9 | 9910 | 52 | 40 |
| 35400053 | VF 320/105R46 | | 172D | | TL | 59 | DW11 | 72.4 | 12.8 | 219.8 | 33.5 | 13880 | 70 | 40 |
| 35400016 | VF 380/90R46 | 14.9R46 | 173D | | TL | 61 | DW13 | 73.0 | 15.4 | 220.3 | 33.9 | 14320 | 64 | 40 |
| 35400062 | VF 480/80R46 | 18.4R46 | 164D | | TL | 66 | DW16 | 76.7 | 19.3 | 228.6 | 34.5 | 11010 | 29 | 40 |
| 35400033 | VF 520/85R46 | 20.8R46 | 170D | | TL | 67 | DW18 | 80.8 | 20.9 | 236.7 | 36.1 | 13220 | 23 | 40 |
| 35400050 | VF 340/85R48 | | 164D | | TL | 56 | DW12 | 71.2 | 13.5 | 216.1 | 33.1 | 11010 | 58 | 40 |
| 35400047 | VF 320/105R50 | | 158D | | TL | 59 | DW11 | 76.3 | 12.7 | 229.8 | 35.2 | 8990 | 40 | 40 |
| 35400133 | VF 320/90R50 | 12.4R50 | 166D | | TL | 56 | W11 | 72.8 | 12.6 | 221.3 | 34.0 | 11700 | 64 | 40 |
| 35400023 | VF 380/90R50 | | 175D | | TL | 59 | W13B | 77.0 | 15.2 | 230.6 | 35.4 | 15200 | 64 | 40 |
| 35400090 | VF 380/105R50 | | 179D | | TL | 60 | DW13 | 80.8 | 15.6 | 243.1 | 37.0 | 17070 | 64 | 40 |
| 35400180 | VF 420/95R50 | | 177D | | TL | 60 | DW14 | 80.8 | 16.7 | 241.4 | 36.7 | 16090 | 52 | 40 |
| 35400021 | VF 480/80R50 | 18.4R50 | 179D | | TL | 66 | DW16 | 80.7 | 19.1 | 240.7 | 38.7 | 17100 | 52 | 40 |
| 35400027 | VF 480/95R50 | | 176D | | TL | 66 | DW16 | 86.1 | 19.1 | 257.9 | 38.7 | 15640 | 35 | 40 |
| 35400006 | IF 230/115R54 | | 151D | | TL | 58 | W8 | 76.7 | 10.1 | 233.5 | 35.9 | 7600 | 46 | 40 |
| 35400041 | IF 270/105R54 | | 158D | | TL | 58 | W10 | 76.6 | 11.0 | 234.2 | 36.1 | 9360 | 58 | 40 |
| 35400036 | VF 320/90R54 | 12.4R54 | 168D | | TL | 36 | DW11 | 76.8 | 12.6 | 234.0 | 35.9 | 12350 | 64 | 40 |
| 35400056 | VF 320/105R54 | | 172D | | TL | 59 | DW11 | 80.3 | 12.8 | 244.6 | 37.4 | 13880 | 64 | 40 |
| 35400029 | VF 380/90R54 | | 176D | | TL | 59 | DW13 | 80.7 | 15.1 | 244.1 | 37.4 | 15640 | 64 | 40 |
| 35400205 | IF 380/105R54 | | 180D | | TL | 60 | DW13 | 85.2 | 15.6 | 257.2 | 39.4 | 17620 | 75 | 40 |

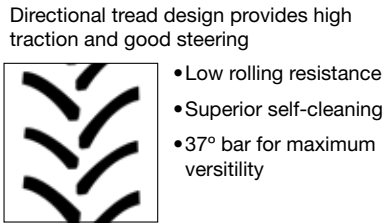
MINIMIZE SOIL COMPACTION



STEEL BELTED



MULTI-ANGLED TREAD DESIGN



AGRIFLEX+ 372 CFO STEEL BELTED R-1W

OEM FITMENT

The Alliance Agriflex+ 372 has state-of-the-art materials and steel-belted construction allowing our IF/VF radial tires to deliver outstanding performance. VF tires carry up to 40% more load at the same inflation pressure as conventional radials, or require 40% lower inflation pressure for the same load, reducing soil compaction. IF tires carry up to 20% more load at the same inflation pressure as conventional radials, or require 20% lower inflation pressure for the same load. Stronger carcass designed for cyclic service and intended for use on minimal torque applications such as combines, harvesters and grain carts (up to 1 mile). (TUBELESS - STEEL BELTED - STUBBLE GUARD)



| PRODUCT CODE | SIZE | ALT. SIZE | PR/LI | PLY/* | TYPE | TREAD DEPTH | PREFERRED RIM | OD | WIDTH | RC | SLR | MAX LOAD (LBS) | PSI | MAX SPEED |
|--------------|----------------------|-----------|-------|-------|------|-------------|---------------|------|-------|--------|------|----------------|-----|-----------|
| 37250024 | VF 520/80R26 CFO | | 168A8 | | TL | 57 | DW16L | 57.7 | 19.9 | 1707.0 | 24.7 | 12330 | 41 | 25 |
| 37200080 | VF 620/70R26 | | 170D | | TL | 57 | DW21B | 58.5 | 24.6 | 172.7 | 25.4 | 13220 | 35 | 40 |
| 37250001 | VF 750/65R26 | | 177B | | TL | 71 | DW25B | 64.4 | 29.7 | 187.2 | 27.5 | 16080 | 35 | 40 |
| 37200008 | VF 420/85R28 CFO | | 151D | | TL | 58 | DW15 | 56.6 | 17.6 | 167.5 | 24.7 | 7600 | 23 | 40 |
| 37200048 | VF 600/60R28 | | 146D | | TL | 62 | DW20B | 61.4 | 24.6 | 163.7 | 26.8 | 14320 | 41 | 40 |
| 37200052 | IF 600/65R28 CFO | | 160D | | TL | 57 | DW21B | 58.5 | 23.9 | 176.4 | 26.2 | 9900 | 35 | 40 |
| 37200096 | VF 600/70R28 CFO | | 173D | | TL | 71 | DW21B | 61.4 | 24.6 | 179.9 | 26.8 | 14300 | 41 | 40 |
| 37200054 | VF 600/60R30 | | 147D | | TL | 63 | DW20B | 58.7 | 23.2 | 170.0 | 25.6 | 6770 | 15 | 40 |
| 37200105 | VF 600/70R30 CFO | | 170D | | TL | 70 | DW21B | 63.0 | 24.6 | 187.8 | 28.0 | 13200 | 35 | 40 |
| 37200063 | IF 620/75R30 CFO | | 164D | | TL | 73 | DW23B | 65.9 | 25.6 | 191.1 | 28.9 | 11020 | 23 | 40 |
| 37200126 | VF 650/75R30 CFO | | 172D | | TL | 74 | DW20B | 67.7 | 26.0 | 194.6 | 28.9 | 13900 | 23 | 40 |
| 37250002 | VF 710/55R30 | | 165D | | TL | 63 | DW25B | 60.8 | 28.8 | 187.2 | 26.6 | 19270 | 23 | 40 |
| 37250003 | VF 710/60R30 | | 171D | | TL | 68 | DW25B | 63.6 | 28.0 | 186.8 | 27.4 | 13550 | 29 | 40 |
| 37200136 | VF 800/65R32 CFO | 30.5LR32 | 184D | | TL | 73 | DW27B | 72.6 | 30.5 | 213.2 | 31.7 | 19840 | 35 | 40 |
| 37200104 | IF 800/70R32 CFO | | 182A8 | | TL | 74 | DW27B | 76.1 | 30.9 | 224.6 | 33.7 | 18700 | 35 | 25 |
| 37200103 | IF 900/60R32 CFO | 35.LR32 | 193D | | TL | 73 | DW30B | 74.4 | 34.8 | 222.4 | 33.3 | 22000 | 46 | 40 |
| 37200150 | IF 1250/50R32 CFO | | 201B | | TL | 76 | DH44B | 81.9 | 49.2 | 244.5 | 35.6 | 22480 | 46 | 30 |
| 37250004 | VF 600/70R34 | | 167D | | TL | 71 | DW21B | 67.1 | 24.6 | 196.1 | 26.5 | 19270 | 23 | 40 |
| 37200097 | IF 650/65R34 | | 161D | | TL | 73 | DW23 | 67.7 | 25.6 | 198.1 | 30.3 | 10200 | 23 | 40 |
| 37250032 | VF 520/85R38 | | 170D | | TL | 69 | DW16L | 72.8 | 20.9 | 215.9 | 31.8 | 13220 | 29 | 40 |
| 37250052 | VF 600/65R38 | | 163D | | TL | 57 | DW21B | 58.5 | 23.9 | 172.5 | 25.6 | 10740 | 29 | 40 |
| 37200130 | VF 710/60R38 | | 160D | | TL | 68 | DW25B | 71.5 | 28.0 | 209.2 | 31.6 | 9910 | 28 | 40 |
| 37200141 | VF 710/70R38 CFO | | 178D | | TL | 77 | DW25B | 77.1 | 28.3 | 225.1 | 33.2 | 16540 | 23 | 40 |
| 37250093 | VF 710/85R38 | | 183D | | TL | 84 | DW25B | 85.2 | 28.7 | 249.2 | 36.7 | 19270 | 23 | 40 |
| 37200118 | IF 800/70R38 CFO | | 187A8 | | TL | 79 | DW27 | 81.9 | 32.3 | 240.2 | 36.5 | 21500 | 41 | 25 |
| 37250106 | VF 900/60R38 CFO NRO | | 155D | | TL | 79 | DW30B | 80.1 | 35.0 | 234.8 | 34.5 | 21480 | 29 | 25 |
| 37200035 | IF 520/85R42 | 20.8R42 | 169D | | TL | 70 | DW16L | 77.0 | 21.3 | 230.9 | 34.6 | 12780 | 35 | 40 |
| 37200036 | VF 520/85R42 CFO | | 177A8 | | TL | 69 | DW16L | 77.0 | 21.3 | 228.6 | 34.4 | 16100 | 41 | 25 |
| 37200044 | VF 580/85R42 | | 183D | | TL | 71 | DW20B | 80.3 | 23.4 | 238.3 | 35.8 | 19270 | 41 | 40 |
| 37200068 | VF 620/70R42 | | 172D | | TL | 68 | DW21B | 76.2 | 24.4 | 225.0 | 33.4 | 13880 | 23 | 40 |
| 37200133 | VF 710/60R42 | | 161D | | TL | 68 | DW25B | 75.7 | 28.0 | 224.0 | 33.5 | 10190 | 15 | 40 |
| 37200095 | VF 710/70R42 CFO | | 185D | | TL | 79 | DW25B | 81.2 | 29.3 | 239.9 | 36.4 | 20390 | 35 | 40 |
| 37200180 | VF 710/75R42 CFO | | 181D | | TL | 79 | DW25B | 84.8 | 28.5 | 247.2 | 37.0 | 18190 | 23 | 40 |

AGRIFLEX+ 377 VF R1

OEM FITMENT

The Alliance Agriflex +377 is the latest addition to Alliance's engineered series of Agriflex tires. It has been designed to fulfil the needs of spreaders, sprayers, combine harvesters and grain carts. Its ability to carry 40% more load at the same amount of pressure makes it well equipped to move the additional weight of fertilizers and herbicides with minimum soil compaction.



| PRODUCT CODE | SIZE | ALT. SIZE | PR/LI | PLY/* | TYPE | TREAD DEPTH | PREFERRED RIM | OD | WIDTH | RC | SLR | MAX LOAD (LBS) | PSI | MAX SPEED |
|--------------|------------|-----------|-------|-------|------|-------------|---------------|------|-------|-------|------|----------------|-----|-----------|
| 37750003 | 1000/50R25 | | 184D | | TL | 58 | 36 | 64.8 | 40.6 | 194.8 | 27.7 | 19820 | 35 | 40 |
| 37750004 | 750/50R26 | | 169D | | TL | 50 | DW25B | 55.6 | 29.7 | 167.2 | 24.1 | 12780 | 35 | 40 |
| 37750142 | 1050/50R32 | | 198D | | TL | 58 | 36VA | 73.3 | 41.7 | 222.4 | 32.3 | 29070 | 52 | 40 |

AGRIFLEX+ 377

A HEAVY DUTY PERFORMER

FOR HEAVY DUTY TASKS

The Agriflex+ 377 is the latest addition to Alliance's series of engineered VF tires. It is specifically designed to maximize the performance of spreaders, sprayers, combine harvesters and grain carts. Its ability to carry 40% more load than standard radials at the same pressure makes it better equipped to move heavy fertilizers and herbicides in the field with minimal soil compaction. Its special stubble guard compound ensures excellent durability, reduced downtime and maximum vehicle productivity. All in all, it's features like these that make the Agriflex+ 377 a powerhouse performer.

WHAT MAKES THE AGRIFLEX + 377 SPECIAL?

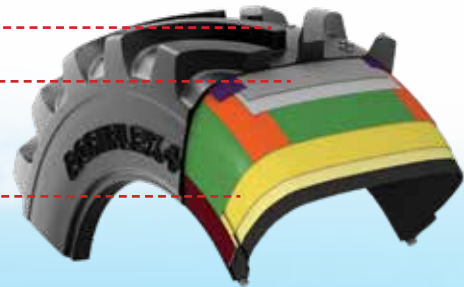
TREAD DESIGN



Rounded shoulders safeguard the tire from stubble damage and provide protection to the soil

Optimized tread pattern ensures high traction

ROBUST CONSTRUCTION & COMPOUNDING



Strong carcass for excellent durability

Steel belts protect the tire from damage and provide a flatter footprint

Special tread compound safeguards tire against wear

Stubble guard compound provides protection against damage in the field



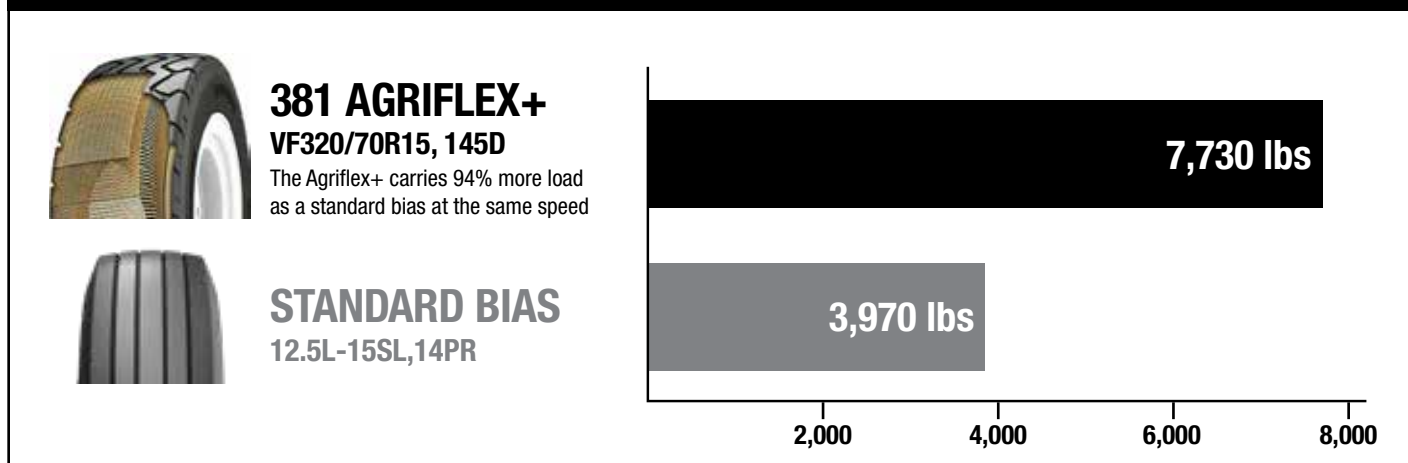
AGRIFLEX 381 IF/VF I2

Alliance Agriflex 381 is an IF/VF steel belted radial flotation tire that has been developed to serve the needs of implements that are pulled on the road at high speeds and then used in fields full of stubble. The unique rib type pattern, enables a large footprint and low ground pressure. The shoulder lugs prevent any excessive tire slip and any consequent damage to the surface. It's specially designed bead area ensures better load carrying capacity.



| PRODUCT CODE | SIZE | ALT. SIZE | PR/LI | PLY/* | TYPE | TREAD DEPTH | PREFERRED RIM | OD | WIDTH | RC | SLR | MAX LOAD (LBS) | PSI | MAX SPEED |
|----------------|-------------------|--------------|-------|-------|------|-------------|---------------|------|-------|-------|------|----------------|-----|-----------|
| 38109005 | IF 240/80R15 | 9.5L-15 | 125D | | TL | 13 | 8LB | 30.1 | 9.7 | 91.3 | 13.6 | 3640 | 52 | 40 |
| 38109015 | IF 265/85R15 | 10.00-15 | 129D | | TL | 13 | 8LB | 32.8 | 10.8 | 98.8 | 14.6 | 4070 | 47 | 40 |
| 38110005 | IF 280/70R15 | 11L-15 | 137D | | TL | 12 | W8 | 30.5 | 11.0 | 91.4 | 13.8 | 5070 | 73 | 40 |
| 38109108 | VF 320/70R15 | 12.5L-15 | 145D | | TL | 14 | 10LB | 32.6 | 12.6 | 97.7 | 14.8 | 6390 | 73 | 40 |
| 38110010 | VF 340/60R16.5 | 32-1350-16.5 | 147D | | TL | 16 | 9.75 | 32.5 | 13.2 | 96.7 | 14.8 | 6780 | 80 | 40 |
| 38150009 | VF 340/60R16.5 | | 145D | | TL | 16 | 16.5 | 32.5 | 13.2 | 96.9 | 14.0 | 6390 | 73 | 40 |
| 38110015 | VF 380/55R16.5 | 33-1550-16.5 | 148A8 | | TL | 16 | 12 | 32.8 | 15.0 | 95.5 | 15.0 | 7825 | 80 | 40 |
| In Development | VF 380/55R16.5 | | | | | | | | | | | | | |
| 38110121 | VF 445/50R22.5 AS | All Steel | 167D | | TL | 19 | AG14.00 | 40 | 17.2 | 122.9 | 17.9 | 12000 | 97 | 40 |

AGRIFLEX 381 LOAD COMPARISON AT 30 MPH



AGRIFLEX+ 881 VF I-2

The Alliance Agriflex+ 881 is the latest addition to Alliance's engineered series of Agriflex tires. Specially designed to provide higher load carrying capacities for Planters, balers, trailers and agricultural implements. It can carry up to 40% more load at the same amount of pressure while ensuring minimum soil compaction. Robust all steel construction with presence of stubble guard compound assures minimum downtime and maximum vehicle productivity making it an ideal partner for heavy duty agriculture applications.



| PRODUCT CODE | SIZE | ALT. SIZE | PR/LI | PLY/* | TYPE | TREAD DEPTH | PREFERRED RIM | OD | WIDTH | RC | SLR | MAX LOAD (LBS) | PSI | MAX SPEED |
|--------------|----------------|-----------|-------|-------|------|-------------|---------------|------|-------|-------|------|----------------|-----|-----------|
| 88190002 | VF 255/70R22.5 | | 149D | | TL | 28 | 7.5 | 36.6 | 9.7 | 109.6 | 16 | 7100 | 78 | 40 |
| 88190005 | VF 295/75R22.5 | | 155D | | TL | 23 | 8.25 | 40.0 | 11.7 | 132.8 | 17.8 | 8540 | 70 | 40 |
| 88190007 | VF 445/65R22.5 | | 175D | | TL | 27 | 14 | 45.3 | 17.5 | 135.8 | 19.7 | 15640 | 78 | 40 |

AGRIFLEX+ 363 STEEL BELTED R-1

OEM FITMENT

The Alliance Agriflex+ 363 is rated for speeds up to 40 mph over the road, and is designed for sprayers that need to perform both on the fields and on the road. State-of-the-art materials and the steel-belted construction allow IF (Increased Flexion) radial tractor tires to deliver outstanding performance in any conditions. IF tires carry 20% more load on the same inflation pressure as conventional radials, or require 20% less inflation pressure for the same load, to reduce soil compaction. (TUBELESS - STEEL BELTED - STUBBLE GUARD)



| PRODUCT CODE | SIZE | ALT. SIZE | PR/LI | PLY/* | TYPE | TREAD DEPTH | PREFERRED RIM | OD | WIDTH | RC | SLR | MAX LOAD (LBS) | PSI | MAX SPEED |
|--------------|--------------|-----------|-------|-------|------|-------------|---------------|------|-------|-------|------|----------------|-----|-----------|
| 36350532 | VF 270/95R32 | | 138D | | TL | 44 | W9 | 52.4 | 11.2 | 156.2 | 24.0 | 5200 | 35 | 40 |
| 36350462 | VF 270/95R36 | | 140D | | TL | 44 | W9 | 56.1 | 10.9 | 168.8 | 26.0 | 5510 | 35 | 40 |
| 36350004 | VF 270/95R38 | | 141D | | TL | 44 | W9 | 58.1 | 10.9 | 174.5 | 26.8 | 5670 | 35 | 40 |
| 36350020 | VF 320/90R46 | | 155D | | TL | 47 | DW11 | 68.8 | 12.1 | 210.0 | 31.8 | 8540 | 41 | 40 |
| 36300036 | VF 380/90R46 | 14.9R46 | 173D | | TL | 49 | DW13 | 72.5 | 15.3 | 218.4 | 33.4 | 14300 | 64 | 40 |
| 36300011 | VF 230/95R48 | 9.5R48 | 146D | | TL | 42 | DW9 | 65.4 | 9.1 | 199.1 | 30.9 | 6600 | 52 | 40 |
| 36300014 | VF 270/95R48 | 11.2R48 | 155D | | TL | 44 | DW10 | 68.2 | 10.8 | 209.8 | 32.1 | 8540 | 58 | 40 |
| 36300220 | VF 320/90R50 | | 166D | | TL | 47 | DW11 | 72.7 | 13.0 | 221.1 | 33.9 | 11670 | 64 | 40 |
| 36300100 | IF 480/80R50 | 18.4R50 | 166D | | TL | 52 | DW16B | 80.2 | 18.9 | 242.2 | 37.0 | 11700 | 35 | 40 |
| 36350100 | VF 480/80R50 | | 169D | | TL | 52 | DW16L | 80.2 | 18.7 | 240.3 | 36.2 | 12780 | 29 | 40 |
| 36300017 | VF 270/95R54 | 11.2R54 | 156D | | TL | 44 | DW10 | 76.6 | 11.3 | 226.1 | 35.2 | 8800 | 52 | 40 |

AGRIFLEX+ 389 VF FLOTATION HF2

OEM FITMENT

The Alliance Agriflex 389 VF-Imp provides the best possible solution for soil protection on large and heavy implements such as towed spreaders, grain wagons, liquid manure tankers and other agricultural trailers.



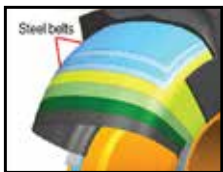
| PRODUCT CODE | SIZE | ALT. SIZE | PR/LI | PLY/* | TYPE | TREAD DEPTH | PREFERRED RIM | OD | WIDTH | RC | SLR | MAX LOAD (LBS) | PSI | MAX SPEED |
|--------------|----------------|-----------|-------|-------|------|-------------|---------------|------|-------|-------|------|----------------|-----|-----------|
| 38950009 | VF500/50R17 | | 150 | NA | TL | 27 | 16 | 36.5 | 19.8 | 109.7 | 15.7 | 7380 | 46 | 40 |
| 38950102 | VF500/60R22.5 | | 157 | NA | TL | 27 | 16 | 46.1 | 19.8 | 139.0 | 20.0 | 9910 | 46 | 40 |
| 38900011 | VF 560/60R22.5 | | 163D | | TL | 29 | AG16.00 | 49.2 | 22.2 | 146.1 | 21.2 | 10750 | 41 | 40 |
| 38900018 | VF 600/55R26.5 | | 167D | | TL | 33 | AG20.00 | 53.1 | 24.8 | 160 | 23.1 | 12020 | 41 | 40 |
| 38900025 | VF 650/55R26.5 | | 171D | | TL | 33 | AG20.00 | 54.5 | 25.6 | 164.3 | 23.6 | 13560 | 41 | 40 |
| 38900026 | VF 650/60R26.5 | | 174D | | TL | 33 | AG20.00 | 57.2 | 26.2 | 172.8 | 24.5 | 14760 | 41 | 40 |
| 38900028 | VF 710/50R26.5 | | 173D | | TL | 33 | AG24.00 | 55.1 | 28.8 | 168.1 | 23.7 | 14330 | 41 | 40 |
| 38900030 | VF 750/45R26.5 | | 172D | | TL | 33 | AG24.00 | 53.5 | 29.7 | 160.9 | 23.2 | 13890 | 41 | 40 |
| 38900045 | VF 750/60R30.5 | | 183D | | TL | 33 | AG24.00 | 66.1 | 30.7 | 199.6 | 28.4 | 19290 | 41 | 40 |
| 38900065 | VF 800/60R32 | | 188D | | TL | 33 | DW27B | 70.9 | 31.5 | 215.2 | 30.6 | 22030 | 41 | 40 |



ENGINEERED TO KEEP YOU AHEAD

Our tires are engineered and manufactured to keep your machinery running more days per year, in more challenging conditions, on the road and in the field. We're a leader in flotation technology, including high-flotation tires rated to 60 mph for safe handling and long wear. We're an innovator in tread design, with patterns that improve steering for faster, more reliable postemergence spraying. And we're experts in compound chemistry, with rubber blends to resist stubble damage and road wear.

One of the great things about VF tires is how easy it is to measure the actual financial impact they have on a farm, especially if you have historical data for comparison. The ability of VF tires to carry more load allows for more efficient field work, especially when working with heavy towed implements like planters, spreaders, and carts—this means more time in the field, less wasted time, and possibly big dollars at the end of the season. Our Alliance brand's Whole Farm Concept is a commitment to delivering a cost-effective VF tire to every piece of farm equipment that enters the field, from tractors to self-propelled sprayers to combines.



The only Steel-belted IF/VF range in the industry

Steel belts in the tread area adds durability. Steel belts also distribute weight evenly and guard against punctures.



Stubble Guard Compound

Our special compounds help protect against punctures caused by harsh stubble, adding life to the tire.



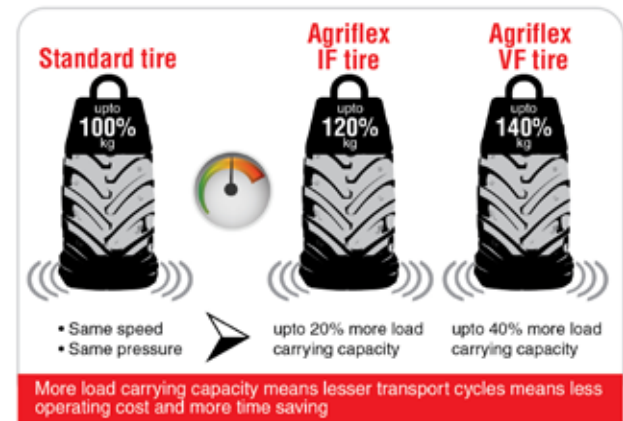
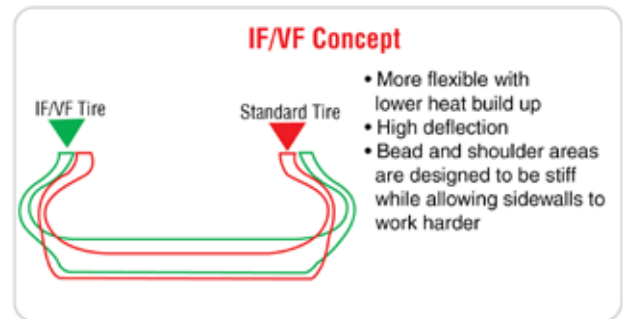
Comfortable ride on the field and high traction on the road

Sidewall deflection enhances overall driving comfort allowing the operator to work longer hours



Helps reduce soil compaction

Larger footprint reduces soil compaction and keeps ruts to a minimum. Lower pressure and larger footprint minimizes damage to sensitive terrain.



VISIT YOKOHAMA-OHT.COM FOR DETAILED LOAD AND PRESSURE TABLES

Distributor:

Yokohama Off-Highway Tires (YOHT) is a division of The Yokohama Rubber Co., specializing in Agriculture, Forestry, Construction, Industrial, Material Handling, Earthmoving, Mining, Port and other commercial tires. YOHT sells its diverse product range, consisting of over 4,000 SKUs, in over 120 countries through its subsidiaries and channel partners. YOHT products are engineered to be application-specific and purpose-built. For more information visit www.yokohama-oht.com or email us at info@yokohama-oht.com.



Contact Yokohama Off-Highway Tires America, Inc. at (800) 343-3276 or (339) 900-8080 for your nearest Yokohama OHT Tire Dealer.

[facebook.com/yokohamaohta](https://www.facebook.com/yokohamaohta)

[@yokohamaohta](https://twitter.com/yokohamaohta)

yohta-blog.yokohama-oht.com

yokohama-oht.com